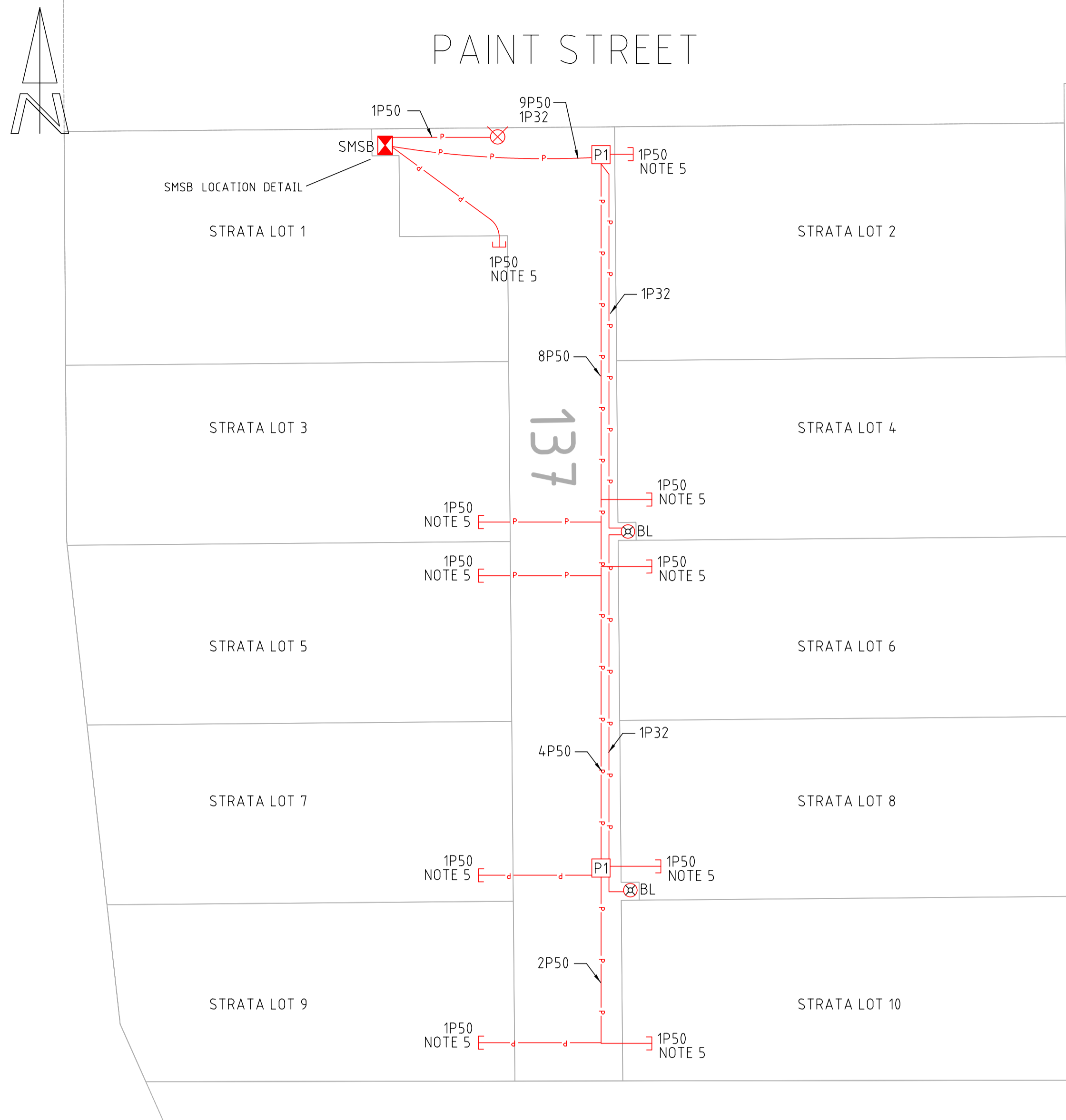


SAFETY - MAKE IT YOUR PRIMARY VALUE



SWITCHBOARD NOTES:

- ORIGINAL MANUFACTURER OF ASSEMBLY SHALL BE BY A COMPANY WHO IS ACCREDITED TO ISO 9001 FOR QUALITY ASSURANCE AND CAN PROVIDE VERIFICATION OF BOARD IN ACCORDANCE WITH AS/NZS 61439 IN FULL.
- BOARD SHALL COMPLY WITH AS61439 PART 1 & 3.
- NO CONSTRUCTION TO COMMENCE PRIOR TO SHOP DRAWINGS BEING REVIEWED BY UPD. ALLOW FOR 2 WEEKS FOR REVIEW PROCESS.
- CONTRACTOR TO PROVIDE REVIEW/SIGNOFF OF SHOP DRAWING.

SMSB - CONSTRUCTION DETAILS

- PROVIDE SUN SHIELD
- MAXIMUM DIMENSIONS: 1000mmH x 750mmW x 250mmD
- MARINE GRADE ALUMINIUM CONSTRUCTION
- AMBIENT TEMPERATURE - DESIGN FOR EXTERNAL IN SUN, KALGOORLIE POWDER COAT TO CLIENTS APPROVAL, FOR PRICING PURPOSES ALLOW TO POWDER COAT CREAM.
- LOCKABLE DOOR TO WESTERN POWER REQUIREMENTS, C/W WIND STAYS TO HOLD DOOR IN OPEN POSITION
- 100mm² CONCRETE PLINTH REQUIRED.
- IP56
- FORM 1 CONSTRUCTION
- Isc = 25kA 1sec
- OUTDOOR IK07
- POLLUTION DEGREE 2
- In = 160A
- LABEL ALL ADJUSTABLE ACB's AND/OR MCCBS WITH SETTINGS
- LABEL SPD WITH AGREED ALLOWANCE AS PER WESTERN POWER MP DRAWING
- PROVIDE HOLDER FOR LEGEND CHARTS, WESTERN POWER MP DRAWING, SHOP DRAWINGS, RELEVANT AS CONSTRUCTED DRAWINGS (A3)
- PROVIDE LABEL TOP OF BOARD WITH FOLLOWING:
 - MANUFACTURE NAME
 - DATE OF MANUFACTURE & SERIAL NUMBER
 - SOURCE OF SUPPLY
 - SIZE OF INCOMING SUBMAINS
 - IP RATING
 - FORM RATING
 - FULL LOAD CURRENT RATING
 - PROSPECTIVE FAULT CURRENT

SYMBOL	DESCRIPTION
	PROVIDE WESTERN POWER DIRECT METER & FUSES FOR COMMON SERVICES
	MINIATURE CIRCUIT BREAKER (MCB) - SINGLE PHASE
	MOULDED CASE CIRCUIT BREAKER (MCCB) - THREE PHASE
	FUSE
	RCBO - 1 PHASE

SYMBOL	DESCRIPTION
	WESTERN POWER UNI-PILLAR. PROVIDE 1m ² CLEARANCE
	SITE MAIN SWITCHBOARD. REFER TO SCHEMATIC
	POWER CONDUIT NOTE: 1P50 INDICATES 1x50mm CONDUIT COMPLETE WITH DRAW WIRE
	LED BOLLARD. NEDLANDS LIGHTING GROUP POWER-LITE BOLLARD 24W 240V 4000K. INSTALL BOLLARD IN ACCORDANCE WITH MANUFACTURERS RECOMMENDATIONS.
	ACO CABLE MATE 600x600 CABLE PIT (TYPE 66) COMPLETE WITH CONCRETE COLLAR AND TRAFFICABLE DUCTILE IRON LID (CLASS D). PIT SHALL BE INSTALLED IN ACCORDANCE WITH MANUFACTURERS INSTRUCTIONS.

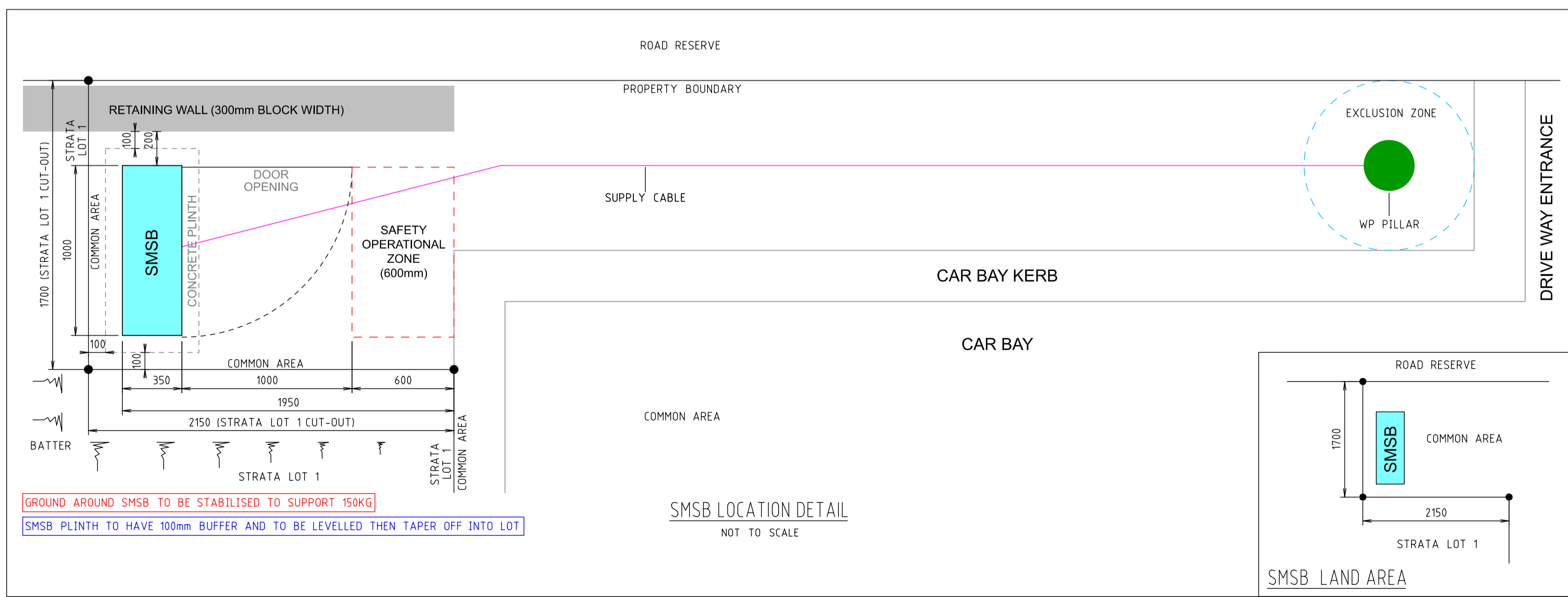
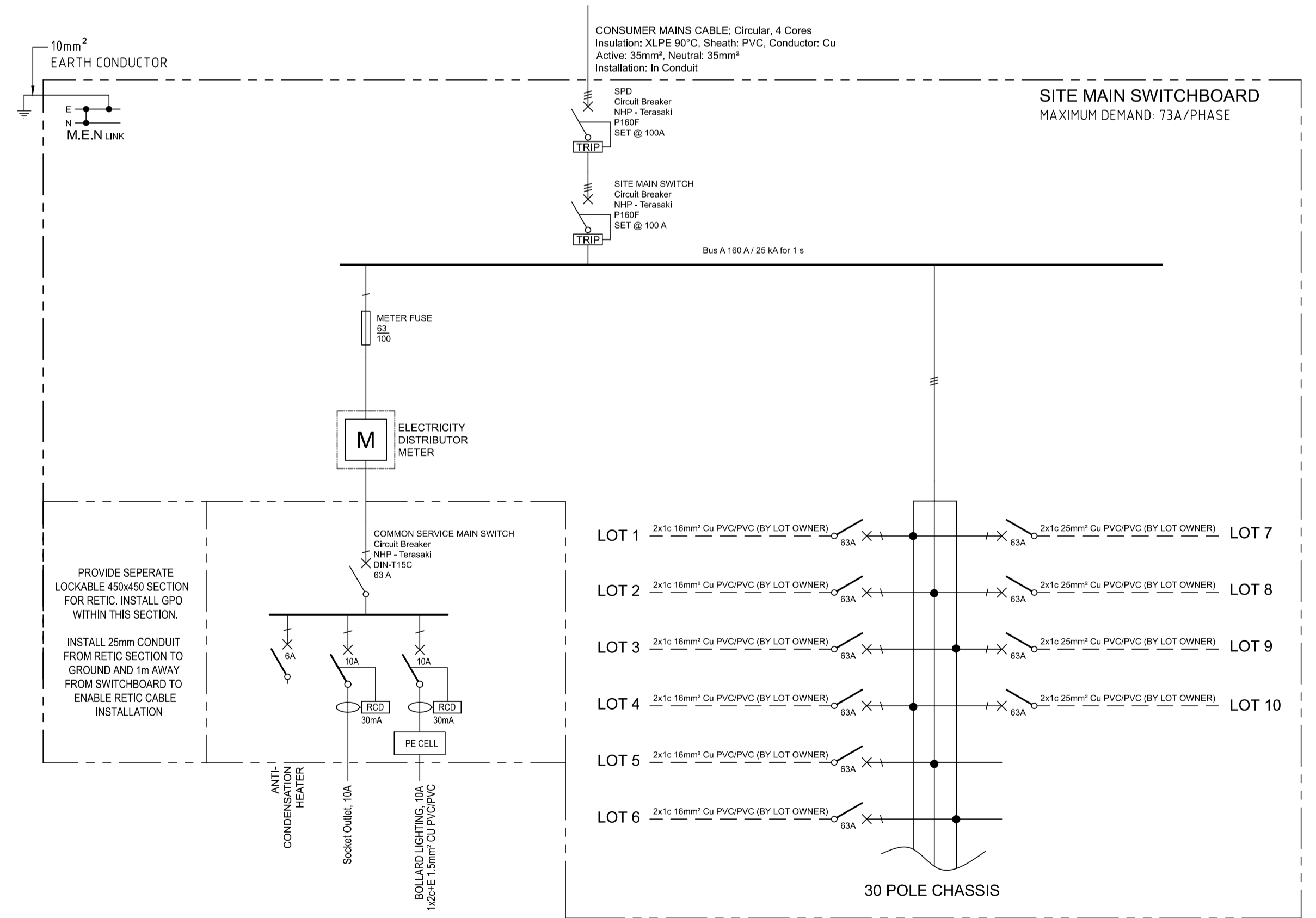
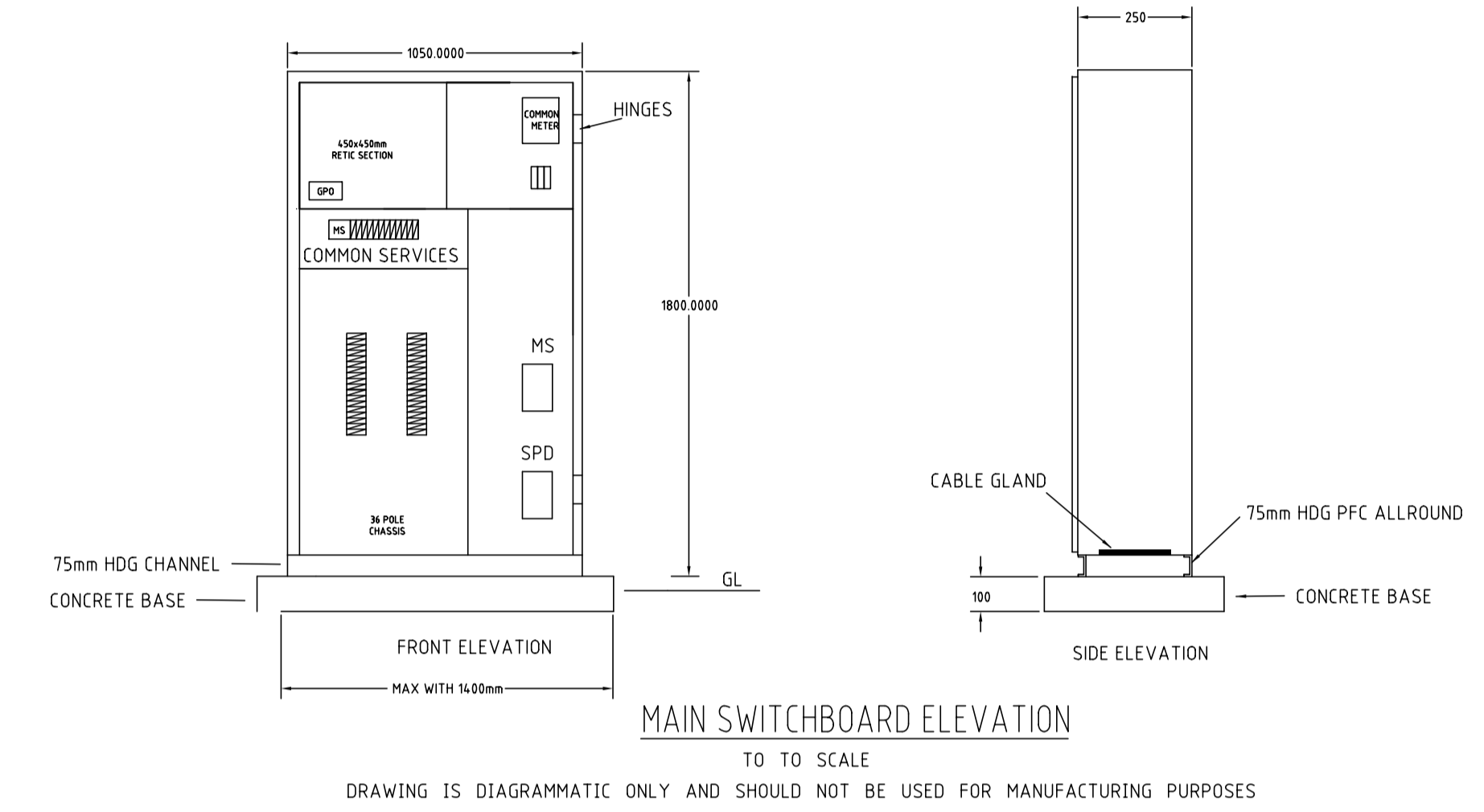
BILL OF MATERIALS	
ITEM	QUANTITY
SMSB (INCLUDING BREAKERS & METERS)	1
SMSB PLINTH	1
CONSUMER MAIN	5m
32mm CONDUIT	55m
50mm CONDUIT	450m
BOLLARD LIGHTS	2
EARTHING (ROD AND CONDUCTOR)	1
TYPE P1 CABLE PIT	2
LIGHTING CIRCUIT	55m

SCOPE OF WORK

- LIAISE WITH WESTERN POWER FOR SITE CONNECTION. WESTERN POWER. ALLOW TO ATTEND PRE-START MEETING WITH WESTERN POWER.
- SUPPLY AND INSTALL NEW SITE MAIN SWITCHBOARD AND CONCRETE PLINTH AS PER SCHEMATIC AND NOTES.
- SUPPLY AND INSTALL NEW CONSUMER MAINS FROM SMSB TO PILLAR.
- PROVIDE TRENCHING AND COMPACTION TO ENABLE IN-GROUND SERVICES.
- SUPPLY AND INSTALL IN-GROUND CONDUITS, ELBOWS, CABLE PIT AND SUNDRIES.

NOTES

- ALL WORKS TO BE CARRIES OUT IN ACCORDANCE WITH AS3000, WAER AND WESTERN POWER REQUIREMENTS.
- PROVIDE AS CONSTRUCTED DRAWINGS IN AUTOCAD TO CLIENT UPON COMPLETION.
- REFER TO CROSS SECTION DETAIL FOR CONDUIT ALIGNMENT.
- PROVIDE DIGITAL PHOTOGRAPHS OF OPEN TRENCHES ILLUSTRATING ROUTES WITH RESPECT TO ADJACENT BUILDINGS OR OTHER REFERENCE POINTS AND DEMONSTRATION THAT MINIMUM DEPTHS ARE MET.
- INSTALL CONDUITS 1m WITHIN RESIDENTIAL LOTS COMPLETE WITH DRAW WIRE. CONDUITS BE CAPPED AND MARKED FOR FUTURE CONNECTION.
- CONFIRM LOCATIONS OF BOLLARD ON SITE WITH SUPERINTENDENT PRIOR TO INSTALLATION.
- SITE SHALL BE INSTALLED AS A DISTRIBUTED MASTER METERING SYSTEM. LOT OWNERS ARE RESPONSIBLE FOR INSTALLATION OF SUBMAIN FROM SMSB TO RESPECTIVE LOT AND FOR INSTALLATION OF WESTERN POWER METER LOCATED AT THEIR RESPECTIVE DWELLINGS.
- LOT OWNERS SHALL ENSURE SOLAR GENERATION SYSTEMS ARE PROVIDED WITH ISOLATION FACILITIES IN ACCORDANCE WITH THE WESTERN POWER DISTRIBUTION CUSTOMER CONNECTION REQUIREMENTS
- UPD SHALL APPLY FOR CONSUMER MAINS CONNECTION WITH WESTERN POWER AND OBTAIN MP QUOTE.



REV	DESCRIPTION	DATE	DRAWN	CHKD
1	SMSB LOCATION DETAIL ADDED	23.03.26	RS	BE
0	ISSUED FOR CONSTRUCTION	13.03.26	LB	BE

THIS DRAWING IS THE PROPERTY OF UPD PTY LTD. UNAUTHORISED USE OR COPYING OF THIS DRAWING IS PROHIBITED.



DARLING DOWNS ESTATE - STATE 5
LOT 9004 ROWLEY ROAD, DARNING DOWNS, WA

10 STRATA LOTS
UNDERGROUND POWER DISTRIBUTION

DESIGNER: LB
DRAWN: NER ENGINEER
SCALE: 1:200
Western Power Reference No: NA
WAPC No: NA

Revision: 1
UPD-5169-05-E1

UPD
Suite 4, 47 Havelock Street
WEST PERTH WA 6005
ABN 63 094 593 067
TEL: (08) 9212 8777 EMAIL: team@upd.com.au